

high quality customer made pp chair plastic injection mold

Product details:

Mold Material:P20,718,S136,etc

Injection Material:PP,PS,PE,PVC,ABC,PC,POM,PA,etc

Sizes:as per customer's requirements

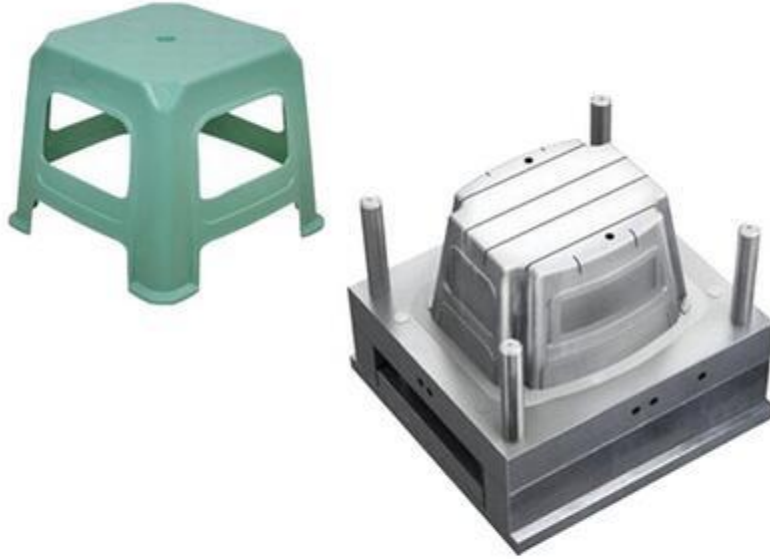
Mould Life:100,000 or 500,000 injections or as per
requirements

Cavity:single cavity or multi cavities

Runner:Hot/Cold

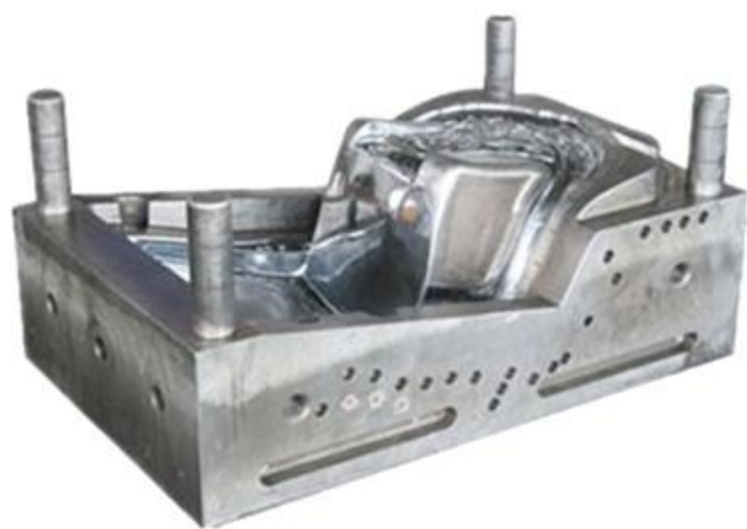
Design Softwares: STEP and X-T,UG,pro-E, ect.

Processing:CNC,High speed carve,E.D.



M,





Know more about ABIS

ABIS was founded in Shenzhen China, adjacent to Hong Kong, in 1996, has its own factory of 12,000 square meters. With the advanced facilities from Germany, Swiss and Japan, and a highly experienced design and engineering team, ABIS builds multi-cavity molds to exacting tolerances, providing the critical structural foundation for leading manufacturing companies to produce high precision mold.

ABIS Mold which engaged in :

1. Cold&Hot Runner/ Single&Multi- Cavity-Injection moulding
2. Single&Multi- Shot
3. Die Cast-Aluminum&Zinc
4. Inserting Mold
5. Overmolding
6. Prototype Tooling
- 7 Mass Production

ABIS applies advanced software for mold design-Auto CAD, UG, Solid works and ProE etc. So far, ABIS has received the "ISO 9001" ,"ROHS" green, SGS certificate.





Customized mold

1. Detailed description of Custom Plastic Mould:

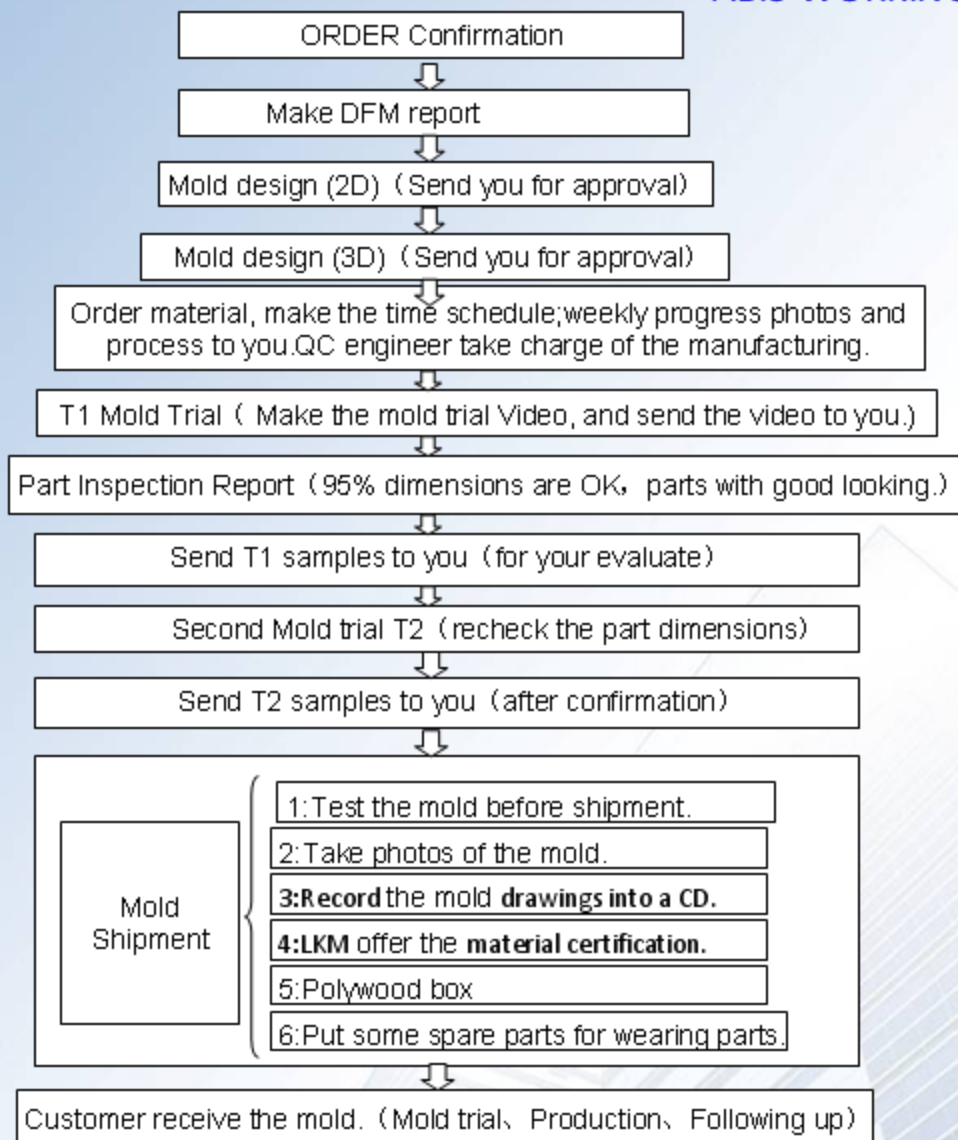
Cavity/Core Material	718H,P20,NAK80,2316,2738,DI N2344,H13 and available
Product Material	ABS,PC,PP,PVC,POM,PMMA,P

	S,PE,PET,RUBBER Silicone,P A,PBT,PEI,etc
Base	LKM or by requested
Structure	Double Color injection mold,So lid Mold,Insert Mold,Mold with Slide,Mold with Lifter
Runner System	Hot runner,Cold runner
Cavity	Single cavity,multi cavity by re quested
Finish	Corrosion word,Mirror finish,Bru shed
Mold standard	HASCO,DME,MISUMI, or by re quested etc
Software	STEP and X-T,UG,pro-E
Tolerance	+/-0.05mm
Design time	5-7 day
Sample time	1 week
Production time	3-5 weeks,depends on mold st

	structure
Main technique	Milling,Grinding,EDM,Wire-cutting,Engraving,CNC etc
Longevity	0.5-1 million shots
Packing	Wooden case,PE,or by requested

2. Custom Plastic Mould making process

ABIS WORKING PROCESS



Mould packaging :



Mold Parking



OUR CERTIFICATE:



认证证书

此证书授予

深圳市艾比斯精密五金塑胶有限公司

认证地址：深圳市龙岗区龙岗街道龙东社区沙背坳福利工业园C栋一层

符合 ISO/TS 16949:2009 质量管理体系标准

认证范围：

塑胶制品（把手）的生产（不包括 7.3 产品设计）

注册号:	首次注册日期:	本次发证日期:
77463/A/0001/SM/2II	2017年1月3日	2017年1月3日
组织机构代码:	注册有效期:	IATF No:
91440300553884491N	2018年9月14日	0255825

发证人:  认证经理

本证书信息可在国家认证认可监督管理委员会官方网站 (www.cnca.gov.cn) 上查询。
URS (中国) 地址: Room 805, 806, Block 3, Tianyi International Building
of Huzhou street No. 588 in Hangzhou City, Zhejiang Province of China. 电话: 0571-86700691



Certificate of Registration

This certificate has been awarded to

Shenzhen ABIS Precision Hardware Plastic Co. Ltd

Floor1, Building C, Sha Bei Li Ying Keil Industrial Park LongDong Community, Longgang Street, LongGang District, Shenzhen City, Guangdong Province, China

in recognition of the organization's Quality Management System which complies with

ISO/TS 16949:2009

The scope of activities covered by this certificate is defined below

Manufacture of Plastic Parts (Handles) (Excludes Product Design under Clause 7.3)

Certificate Number: Date of Issue of Certification Cycle:

77463/A/0001/SM/En 03 January 2017

Issue No: Expiry Date: IATF No:

1 14 September 2018 0255825

Issued by:  On behalf of the Schemes Manager





BEIJING HANGXIE CERTIFICATION CENTER CO.,LTD.
**QUALITY MANAGEMENT SYSTEM
CERTIFICATION**

ABIS MOLD TECHNOLOGY(HK)CO.,LTD

Organization Code: 55388449-1

No.102,Building B, Ying Keli Industry Area, Longgang District, Shenzhen,China. P.C 518116

is in conformity with

GB/T19001-2008 (ISO9001:2008)

This certificate is covering the following product scope

Plastic Mold Development and Manufacturing; Plastic Products Production

(Not Include the Products With Administrative Licensing)

Registration No. 03415Q20263R0M

The Duration of Validity :Feb . 10, 2015—Feb . 09, 2018



MANAGEMENT SYSTEM
CNAS C034-Q



General Manager: 

BEIJING HANGXIE
CERTIFICATION CENTER CO.,LTD.

FAQ:`

Q1. What is your terms of delivery?

A: EXW, FOB, CFR, CIF.

Q2. How about your delivery time?

A: Generally, it will take 30 to 60 days after receiving your advance payment. The specific delivery time depends on the items and the quantity of your order.

Q3. Can you produce according to the samples?

A: Yes, we can produce by your samples or technical drawings. We can build the molds and fixtures.

Q4. What is your sample policy?

A: We can supply free small quantity sample , but the customers have to pay the shipping cost.

Q5. Do you test all your goods before delivery?

A: Yes, we have 100% test before delivery

Q6: How do you make our business long-term and good relationship?

A:1. We keep good quality and competitive price to ensure our customers benefit ;

2. We respect every customer as our friend and we sincerely do business and make friends with them, no matter where they come from..

Contact me :

ABIS MOLD TECHNOLOGY CO., LTD

<http://www.abismold.com>

Cell/ Whatsapp/Wechat: 0086-183 7925 8646

Email/Skype: sunnys@abismold.com

Tel: +86-755-89984896 Ext 804

Fax: +86 -755-28960682

Add: Building B#, YingKeli Industrial Park, LongDong Community, LongGang District, S
518116

